

## Glyn Rhonwy Pumped Storage Development Consent Order

### Consultation Report - Summary

---



<b>PINS Reference</b>	EN010072	
<b>Document Nos.</b>	5.01.1	
<b>Regulations</b>	S.37(3)(c) and (7)	
<b>Authors</b>	Snowdonia Pumped Hydro	
<b>Revision</b>	<b>Date</b>	<b>Description</b>
0	October 2015	Submission Version

---

## Table of Contents

1. Introduction.....	2
2. The Proposed Development.....	3
3. Approach to Consultation .....	5
4. Non-Statutory Consultation.....	9
5. Statutory Consultation .....	10
Section 42 Consultation .....	10
Section 47 Consultation .....	12
S48 Notices.....	14
6. Having Regard to Responses.....	15
7. Key Issues Raised.....	15
8. Evolution of the Development.....	16
9. Conclusion.....	16

## 1. Introduction

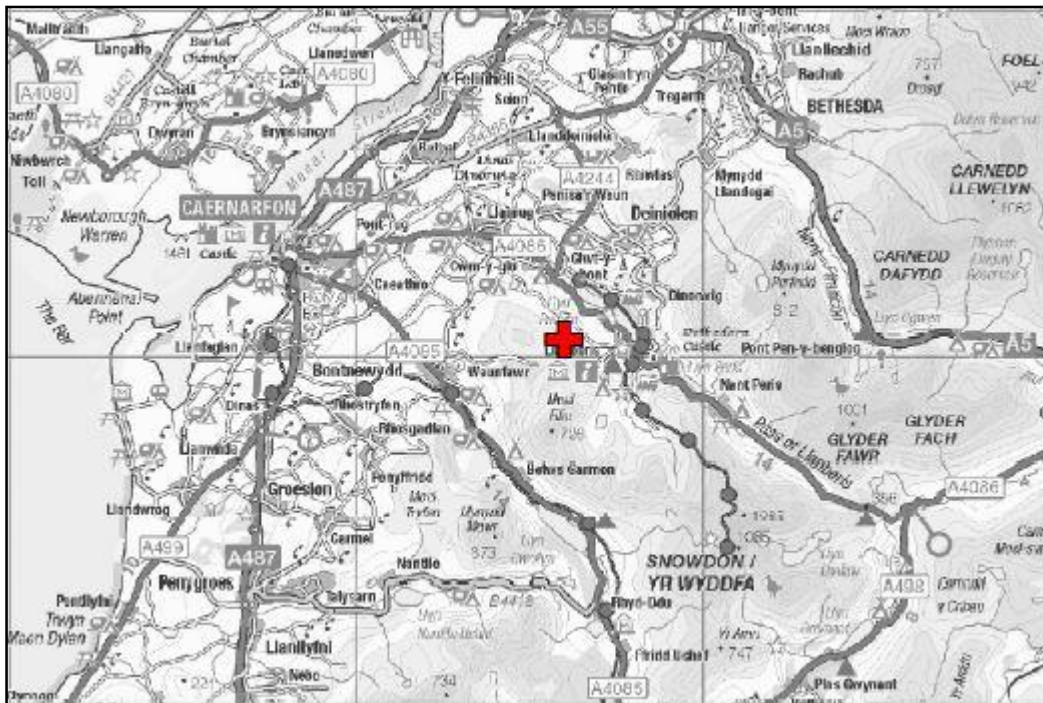
- 1.1.1 This document summaries the Consultation Report (Document Ref: 5.01) submitted with the application by Snowdonia Pumped Hydro Limited (SPH) for the Glyn Rhonwy Pumped Storage Order.
- 1.1.2 As required under the Planning Act 2008 (the Act), the Consultation Report gives details of
- What has been done by SPH in compliance with the consultation and publicity requirements in sections 42, 47 and 48 of the Act;
  - The Reponses received to the consultation; and
  - How SPH has had regard to these responses in preparing the application for a DCO for the Development.
- 1.1.3 The Consultation Report also explains the additional non-statutory consultation SPH has undertaken with a range of stakeholders in respect of its proposals.
- 1.1.4 The Consultation report also provides an overview of the consultation undertaken in respect of the Town & Country Planning Act (T&CPA) consent (Ref: C12/1451/15/LL) granted by Gwynedd Council (GC) to Quarry Battery Company Ltd (“QBC”) to develop Glyn Rhonwy Pumped Storage with a capacity of 49.9MW (mega watts) in February 2014 (“the approved scheme”).
- 1.1.5 Consultation on the approved scheme began in 2011 and was conducted by QBC in connection with the T&CPA application. More information on the T&CPA consultation can be found in section 4 of this summary document.
- 1.1.6 Following the grant of planning permission, QBC established SPH to deliver the approved scheme. However, due to changes in the energy market, SPH took the decision to increase the output capacity of the approved scheme to 99.9MW.

- 1.1.7 SPH has conducted a single phase consultation process for the Development as the design of the scheme has not fundamentally changed from the approved scheme consented under the T&CPA.
- 1.1.8 Statutory pre-application consultation was carried out under sections 42, 47 and 48 of the Act between 12 February and 13 March 2015 for a period of 30 days. The consultation included an explanation of the differences between the approved scheme and the DCO application.
- 1.1.9 SPH has had regard to the responses received throughout the consultation process (and those provided previously on the approved scheme) during the preparation of the application for the Development, as evidenced in the Consultation Report.

## **2. The Proposed Development**

- 2.1.1 QBC was granted planning permission (Ref: C12/1451/LL) by GC on the 19th February 2014 for the construction and operation of a 600MWh (megawatt hours) pumped storage scheme, with an output capacity of 49.9MW (Mega Watts), at the Glyn Rhonwy and Chwarel Fawr quarries, near Llanberis. The 49.9MW scheme is hereafter referred to as the “approved scheme” and as the permission was granted under the Town & Country Planning Act 1990 (T&CPA), this is known as the “T&CPA application”. An application (Ref: C15/0308/15/DA) for a non-material amendment (NMA) was submitted in March 2015 to correct an inaccuracy in the plans listed under Condition 2 of the extant permission. The application was approved on 6th May 2015 and Condition 1 of the NMA approval lists the approved plans correctly. For the avoidance of doubt, references to the ‘approved scheme’ relate to the scheme as approved under application ref: C12/1451/LL, and the non-material amendment to the decision notice made under planning application ref: C15/03 08/15/DA.
- 2.1.2 The development for which the Applicant is seeking consent (“the Development”) has an increased output capacity of 99.9MW (as opposed to the 49.9MW output of the approved scheme).

2.1.3 The Development is located approximately 1.5km north west of Llanberis and 11km south east of Caernarfon. It is located on the slopes of Cefn Du, centred at National Grid reference SH 56268 60660.



2.1.4 The Development site encompasses a series of disused quarries, the Glyn Rhonwy Industrial Estate platforms and an area adjacent to Llyn Padarn, all within the boundary of GC. The Development covers an area of approximately 91.24ha.

2.1.5 The extent and location of the Development site is shown on the Location Plan submitted with the DCO application as Document Ref: 2.01.

2.1.6 The Development consists of the following components:

- Upper reservoir or “headpond” (Quarry 1(Q1) Chwarel Fawr) its dam and spillway infrastructure to Nant Y Betws;
- Lower reservoir or “tailpond” (Quarry 6 (Q6) Glyn Rhonwy Quarry) its dam and spillway infrastructure to Llyn Padarn;
- A power house at Glyn Rhonwy Industrial Estate platform 5 (south of Q6)

- The “penstock”, a pipe connecting Q1 to the power house located adjacent to Q6;
- The “tailrace”, a pipe connecting the power house to the tailpond at Q6; and
- A pumping station near Llyn Padarn.

2.1.7 The design evolution and a full description of the Development can be found in Chapters 3 and 4 of the Environmental Statement (Document Ref: 6.02).

### **3. Approach to Consultation**

3.1.1 In preparing the consultation strategy and carrying out this consultation, SPH has had regard to the following Advice and Guidance:

- *The Planning Act 2008: Guidance on the pre-application process (Department of Communities and Local Government, March 2015). (“the DCLG Guidance”)*
- *Advice Note 14: Compiling the consultation report (Planning Inspectorate, Version 2: April 2012).*
- *Advice Note 16: The developer’s pre-application consultation, publicity and notification (Planning Inspectorate, Version 1: April 2012).*

3.1.2 SPH and its development team implemented a consultation strategy based on the Act and DCLG Guidance. In choosing to conduct a single stage consultation process, a number of factors were taken into consideration:

- A smaller version of the scheme (49.9MW) already had planning permission under the T&CPA (i.e. the approved scheme);
- Consultation with statutory bodies and the local community was undertaken in connection with the T&CPA application, with the result that substantial changes were made to the scheme design as part of obtaining the extant planning permission in order to

address issues that were raised. This activity (together with the non-statutory consultation undertaken in connection with the DCO application) is considered to fulfil the suggested use of iterative non-statutory consultation at an early stage to inform the development of proposals;

- Existing stakeholder and community engagement links were already established by SPH including with GC (the local authority), statutory consultees (Natural Resources Wales (NRW), Snowdonia National Park Authority (SNPA), Cadw) and the local community.
- The design of the above-ground elements of the Development have remained largely unchanged since QBC received the formal grant of planning permission for the approved scheme in February 2014. The principal changes are below ground resulting from the fact that more powerful turbines (and associated equipment underground) will be installed. This means the potential benefits and impacts of the Development are very similar to those of the approved scheme.

3.1.3 The key focus of the consultation was communicating why SPH are applying for a scheme with a larger generating capacity, explaining why a DCO is required, and seeking feedback on the design of the Development as well as its benefits and impacts.

3.1.4 As stated in the Statement of Community Consultation (SoCC), the consultation was designed to ensure that the local community had the opportunity to fully consider and comment on the proposals.

3.1.5 The consultation zone was extended to 1.5km from the Order Limits (relative to the zone used for the T&CPA consultation) and a more thorough contact database was established to encourage wider public engagement during the statutory consultation.

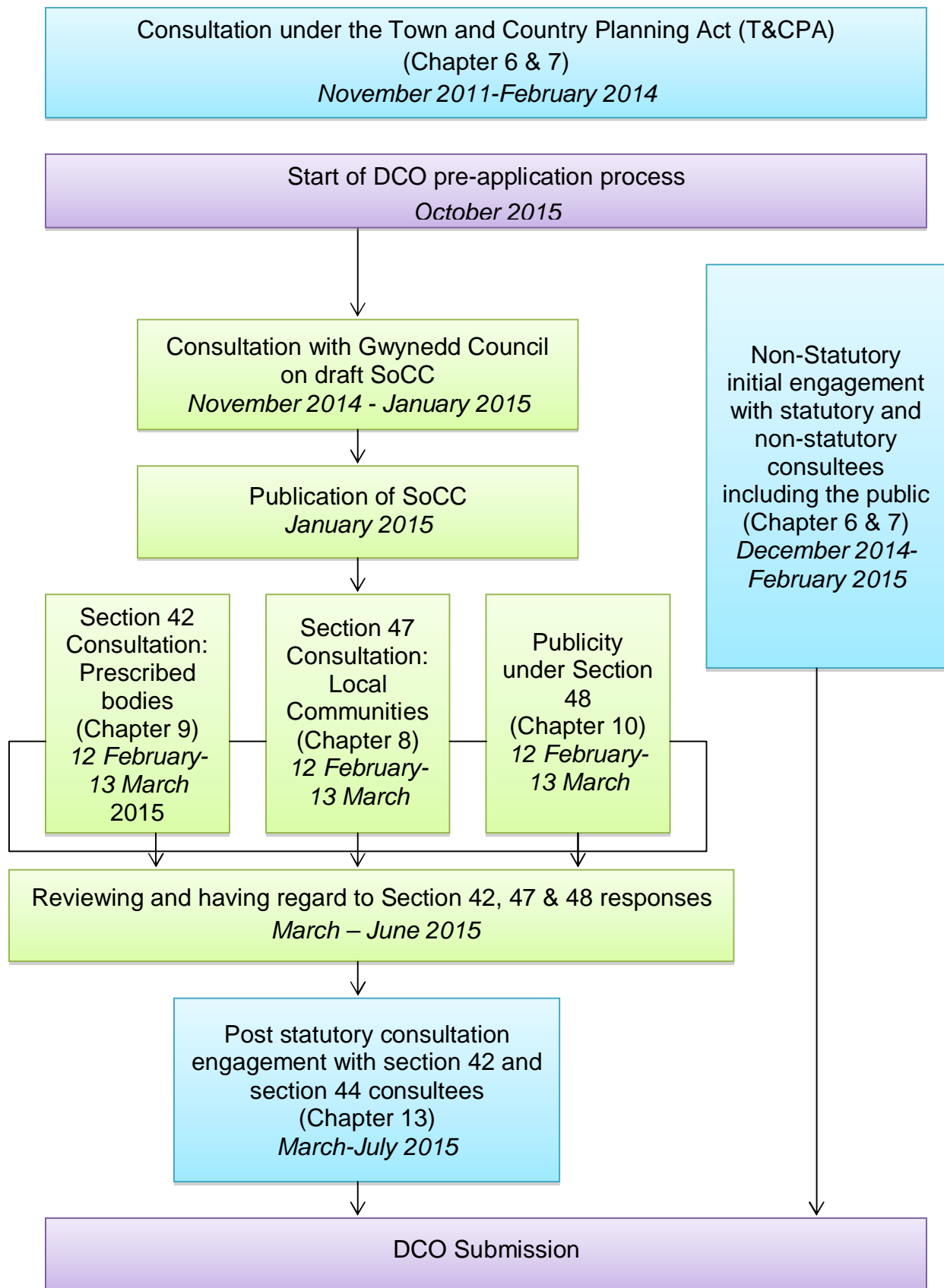
3.1.6 Taking into account the past consultation activities and limited change to the design of the approved scheme, it was considered a single stage of

statutory consultation was likely to be appropriate, supported by a programme of non-statutory consultation and engagement with SPH's existing network of stakeholders and community relationships.

- 3.1.7 SPH kept its consultation strategy under review following the conclusion of the statutory consultation. Having regard to the nature and scale of changes, as advised by the DCLG Guidance, SPH continued non-statutory engagement with key stakeholders such as GC and NRW.



**Figure 1: Timeline of Pre-application Consultation**



## **4. Non-Statutory Consultation**

- 4.1.1 SPH undertook early and on-going non-statutory consultation with the community in preparation for the submission of the DCO application and had regard to the consultation previously undertaken in connection with the extant T&CPA planning permission.
- 4.1.2 Pre-application consultation with the local community on the approved scheme took place in June and July 2012. The details of the consultation are set out in a Statement of Community Engagement, which was submitted as part of the T&CPA application.
- 4.1.3 Although this consultation was conducted under a different planning regime, it acts as effective early engagement as recommended in the DCLG's guidance on the pre-application process.
- 4.1.4 Two public exhibitions were held in Llanberis on 29 and 30 June 2012 and attended by 140 people. An additional community meeting was held in Waunfawr attended by 35 residents.
- 4.1.5 Following the decision to seek the approval of a 99.9MW scheme, SPH sought to raise awareness within the community of its intention to submit a DCO application through the publication of press releases, through a mail out and by setting up a project website.
- 4.1.6 In addition, SPH also undertook early and on-going non-statutory consultation with prescribed statutory bodies.
- 4.1.7 Initially SPH, through dialogue with PINS, sought an informal scoping opinion from the main statutory consultees, and submitted a scoping letter to In November 2014. The informal approach was initially agreed given the limited changes since the planning permission for the approved scheme was granted.
- 4.1.8 However, after further consideration and amendments to the Order Limits it was agreed that a formal Scoping Opinion would be sought from the Secretary of State (through PINS). SPH withdrew the Scoping Letter on 9

December 2014 and sought a formal Scoping Opinion from PINs on 5th January 2015 in accordance with Regulation 8 of the EIA Regulations.

4.1.9 SPH have also held numerous meetings with stakeholders between October 2014 and September 2015 and issued a press release and mail out in November 2014.

4.1.10 Further details of the non-statutory consultation undertaken by SPH can be found in Chapters 7 and 8 of the Consultation Report.

## **5. Statutory Consultation**

5.1.1 SPH undertook the following statutory consultation in accordance with the requirements in sections 42, 47 and 48 of the Act.

### **Section 42 Consultation**

5.1.2 Consultation under s42 ran for 30 days and was undertaken concurrently with the s47 consultation from Thursday 12 February until Friday 13 March 2015. Each of the following were identified for the purposes of the section 42 consultation;

- The relevant prescribed bodies listed in Schedule 1 to the Infrastructure Planning (Applications: Prescribed Forms and Procedure) Regulations 2009;
- Relevant local Authorities; and
- Those persons with an interest in the land affected by the proposed application.

5.1.3 In addition to the prescribed consultees, there are a number of non-prescribed bodies that SPH has also included in the consultation, such as environmental, wildlife and heritage organisations.

5.1.4 A letter was sent to all s42 consultees (including the non-prescribed consultees referred to at paragraph 4.1.9) on 10 February 2015, informing them of the consultation, the process for providing feedback and the date by which feedback needed to be made and how to obtain further information. S44 consultees were sent a different letter informing

the consultee they had been identified as a Person with an Interest in the Land.

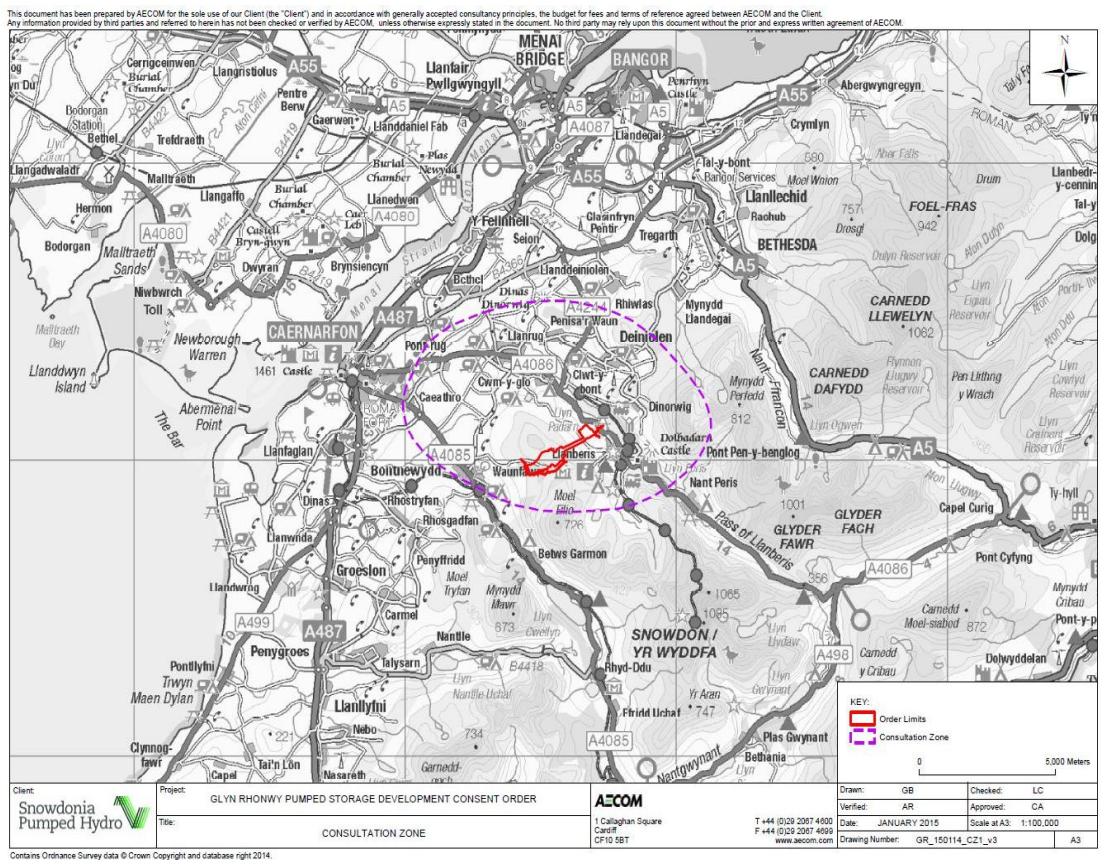
- 5.1.5 In accordance with the Regulation 10 and the DCLG Guidance, and given the previous planning history for the Development site, the preliminary environmental information (PEI) was presented in the form of a Draft ES (dated February 2015) , as it provided the full results of the EIA for the Development at the time of publication.
- 5.1.6 The information contained in the Draft ES (February 2015) was issued to s42 consultees to provide them with an opportunity to understand the likely environmental impacts of the proposed Development and provide feedback on these impacts.
- 5.1.7 Throughout the statutory consultation period communications with consultees continued through a variety of feedback mechanisms including meetings, emails and telephone conversations.
- 5.1.8 A number of feedback mechanisms were put in place in order to provide a transparent and coherent approach to consultation. Responses and enquiries could be made through a dedicated email address and postal address and via telephone
- 5.1.9 As a result of further diligent inquiry into the project site, SPH identified four additional s42(1)(d) parties who had not been identified for the purposes of the s42 consultation. These parties had originally been captured by the s47 consultation.
- 5.1.10 Consultation packs for s42 consultees were sent out to the four additional parties on 9th March 2015 and their consultation deadline was extended to 8th April 2015 to allow for the appropriate timetable for consultation under s42.
- 5.1.11 Full details of the s42 consultation are set out in Chapter 4 of the Consultation Report.

### Section 47 Consultation

5.1.12 In accordance with s47 of the Act, SPH undertook consultation with communities, groups and individuals that live, work or use the area surrounding the proposed development site, or may potentially be impacted by the proposed development.

5.1.13 A geographic consultation zone was identified as set out in Figure 2.

**Figure 2: Consultation zone used to capture s47 consultees**



5.1.14 The zone was identified taking the following into consideration:

- incorporation of 9 major viewpoints from the locality (such as Llanberis and Dinorwig). These are within the Zone of Theoretical Influence defined by the Landscape and Visual Impact Assessment (LVIA) (see Volume 4, Figure 6.3 of the ES), which takes into account those areas where it is possible to see the various components of the Development, namely the dams. Recreational viewpoints at Snowdon, Moel Eilio and Glyder Fawr

have not been included as there are no settlements in these areas and they are considerably further away;

- local transport routes including construction vehicles and abnormal loads, especially to Q1 from the A4086.
- community council boundaries; and
- potential localised impacts from noise, especially blasting during construction, and air quality.

5.1.15 Consultees in the wider area were made aware of the proposals through s48 Notices and press coverage and were able to engage through the project website.

5.1.16 Consultation under s47 ran for 30 days and was undertaken concurrently with the s42 consultation from Thursday 12 February until Friday 13 March 2015.

5.1.17 As required by s47 and the relevant guidance, SPH produced a SoCC to provide details of the purpose, scope and methods of consultation, and then consulted with the local community in line with the commitments set out in the SoCC. The SoCC was published on the project website on 29 January 2015 in preparation for the beginning of the consultation period.

5.1.18 The following consultation materials were available to s47 consultees throughout the consultation period:

- Consultation Newsletter
- Feedback form
- Consultation Overview Report
- Draft Environmental Statement
- Non-technical Summary

5.1.19 During the s47 consultation period, SPH held a number of consultation events and used a variety of communication techniques to ensure the local community and stakeholders had an opportunity to comment on the

Development, these included a bilingual helpline, mail out and public exhibitions.

5.1.20 In order to expand the reach of the consultation, SPH undertook targeted consultation with hard to reach groups within the community. These groups were identified through discussions with GC in finalising the SoCC.

5.1.21 Public exhibitions were held over two days in February 2015, at which details of the proposed Development could be viewed and discussed with members of the Development team, two Welsh translators were in attendance at both exhibitions to greet the public in Welsh, help communicate the purpose of the exhibitions and to convey technical questions asked in Welsh to the Development team.

5.1.22 The consultation materials were designed to encourage consultees to feedback on the proposed development with a focus on the layout and design of the proposal, and potential local impacts (such as environmental, visual, traffic management and socio-economic issues). In addition, consultees were able to provide comment on other aspects of the scheme if they wished

5.1.23 Full details of the s47 consultation are detailed in Chapter 5 of the Consultation Report.

#### **S48 Notices**

5.1.24 Consultation under s48 was undertaken concurrently with the consultations under s42 and s47 of the Act. It ran for 30 days from Thursday 12 February 2015 until Friday 13 March 2015.

5.1.25 The consultation under s48 comprised of placing the required statutory notices in the local, Welsh and national press, with the aim of informing the wider public of the proposal, where to find more information and how to engage in the consultation.

5.1.26 Full details of the s48 publicity and consultation are detailed in Chapter 6 of the Consultation Report.

## **6. Having Regard to Responses**

6.1.1 In accordance with s49 of the Act, SPH has carefully considered all responses received in response to the consultation and has had regard to these in the formation of its final application. Chapters 9 and 10 of the Consultation Report set out SPH's response to each of the issues raised and where the assessments have been undertaken reference to the ES has been made.

## **7. Key Issues Raised**

7.1.1 A total of 25 responses were received from statutory consultees as part of the s42 consultation.

7.1.2 A total of 643 responses were received from the local community in response to the s47 consultation, received through feedback forms returned online via the project website, via the freepost address or at a public exhibition, emails via the project email address and issues logs at the public exhibitions. This includes direct consultation with hard to reach groups.

7.1.3 No responses were received under the s48 consultation.

7.1.4 All responses received from statutory consultees, local communities and the general public have been entered into an "issues grid" database to assist with the management and documentation of the consultation.

7.1.5 The key issues raised by respondents is outlined below

- Impacts associated with Construction (including Air quality, Noise, Traffic and Transport, project Description)
- Environmental impacts associated with the Development and associated mitigation (including Archaeology, Ecology, Landscape and Visual Amenity, effects from light, effects on Llyn Padarn, Geology and Soils, Cumulative impact and Socio-economics)
- Water resources issues (including Flood risk)



- Issues surrounding land
- Queries regarding the grid connection; and
- Support for the Development to secure jobs and investment to the area.

7.1.6 The Issues grids detailing the full responses and SPHs regard to the responses can be found in Appendices 7 and 8 of the Consultation Report.

## **8. Evolution of the Development**

8.1.1 The Development has gone through an iterative design process with the approved scheme forming the baseline for the DCO application. Since the grant of planning permission there have been some changes to the scheme - further detail is provided in Chapter 3 of the ES, which documents the evolution of the design of the Development from the T&CPA application, through to the approved scheme and then to the Development subject to the DCO. The changes are as a result of more detailed mapping of the site and as a result of the various consultations undertaken. As outlined in section 11.1.5 of the Consultation Report these changes were not deemed material in nature and therefore a further round of formal consultation was not considered necessary. SPH engaged directly with key consultees, (NRW and GC) to discuss these changes.

## **9. Conclusion**

9.1.1 The Consultation Report sets out how SPH has complied with the requirements under s42, s47 and s48 of the Act and how it has had regard to the responses received to the statutory consultation.

9.1.2 The key changes that have been made to the proposed Development as a result of the consultation include:

- No material changes to the Development design have been required following the statutory consultation.

- Modification to the scope of the Final ES has taken place in light of the s42 responses received from NRW and GC. These include:
  - Additional ecology surveys including fish, invertebrates and breeding birds;
  - Updated and additional mapping and topographical surveys including laser scan of the quarries and bathymetry;
  - Additional traffic count surveys;
  - Updated water framework directive assessment including a new water balance model;
  - Updated assessment for unexploded ordnance (UXO);
  - Updated visual assessment and photomontages; and
  - Additional noise monitoring survey and assessment.
- The pumping station has been moved away from the shores of Llyn Padarn and an alternative location outside of the lagoons area is being explored, both location area assessed within the ES;
- SPH note the high level of interest in the Development and will continue to work with statutory consultees and the local community;
- A number of changes to the Order Limits have taken place as outlined in Chapter 11 of the Consultation Report. These changes are not considered to materially change the Development proposed.