

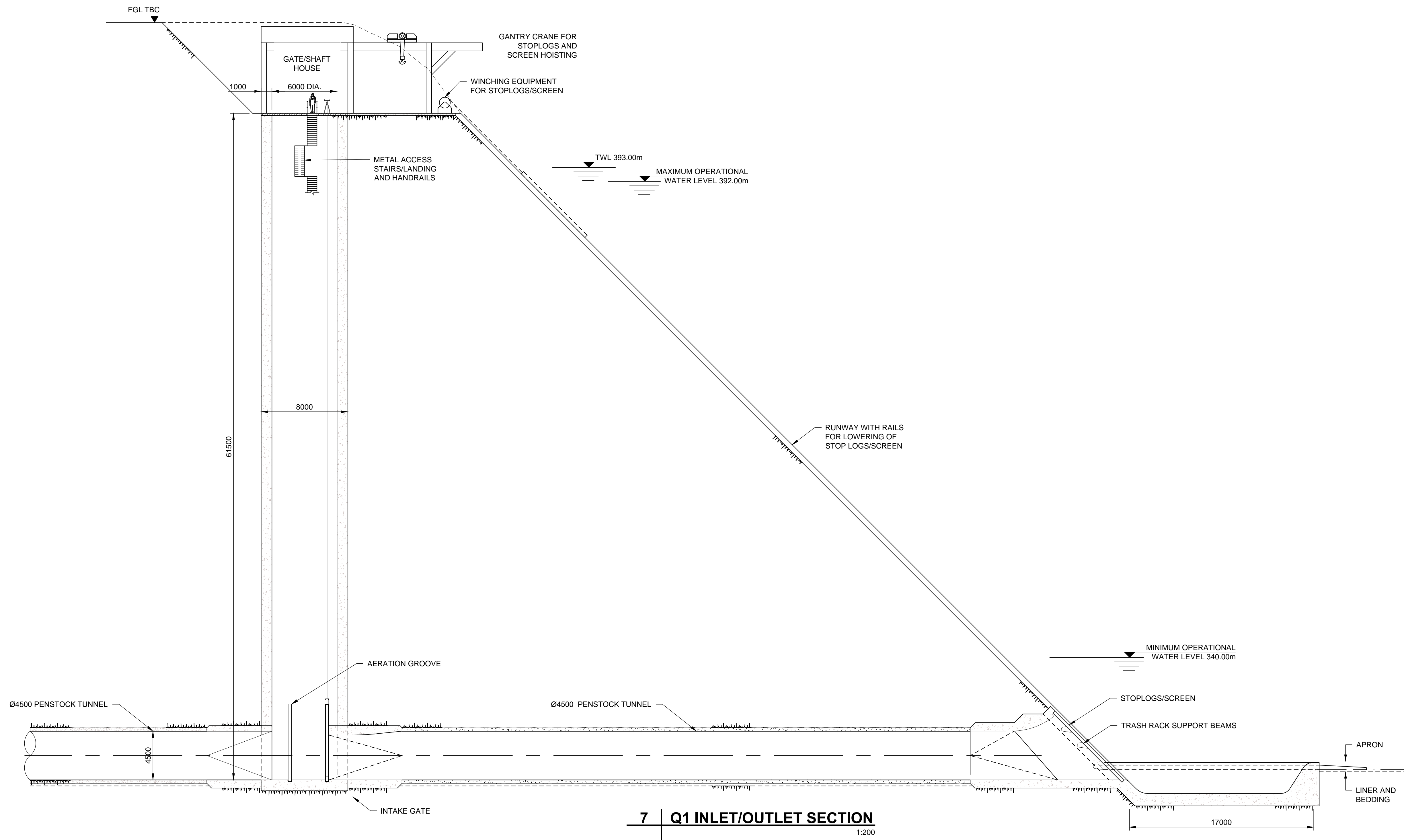
## Glyn Rhonwy Pumped Storage Development Consent Order

### Indicative Elevations & Section of Penstock Inlet / Outlet Configuration

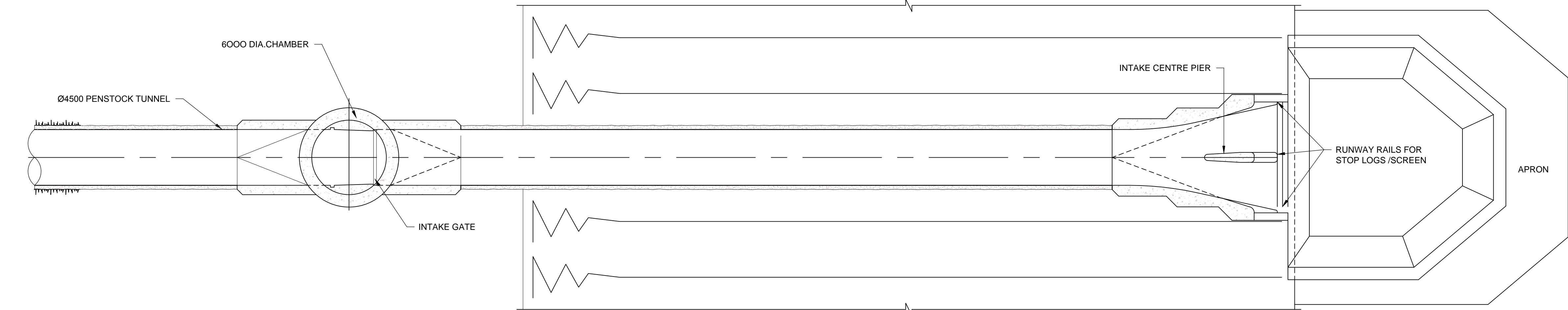
---



<b>PINS Reference</b>	EN010072	
<b>Document No.</b>	2.06.4	
<b>Regulation</b>	5(2)(o)	
<b>Author</b>	AECOM	
<b>Revision</b>	<b>Date</b>	<b>Description</b>
0	October 2015	Submission Version



**7 | Q1 INLET/OUTLET SECTION**  
1:200



**8 | Q1 INLET/OUTLET LAYOUT**  
1:200

**LEGEND**

TWL TOP WATER LEVEL  
FGL FINISHED GROUND LEVEL

**NOTES**

- ALL DIMENSIONS IN METERS UNLESS OTHERWISE NOTED. DO NOT SCALE.
- ALL LEVELS IN METRES AND REDUCED TO ORDNANCE DATUM UNLESS OTHERWISE NOTED.

0 5000 10000 mm  
1:200